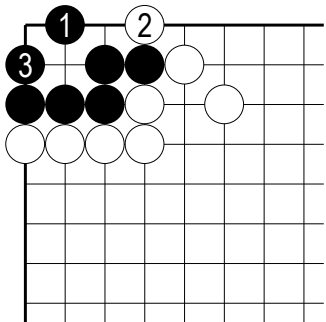


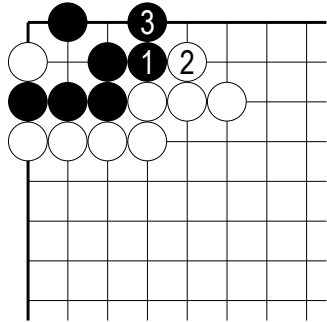
# 「生き死に」に慣れるための基本詰碁⑨～解答編～

各問題、黒1と打つことで二眼を作ることができます◎  
 確かめてみましょう。

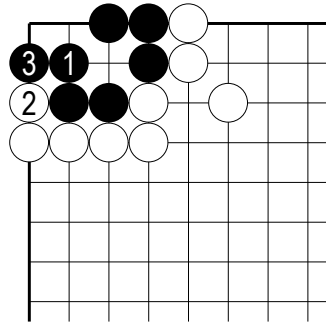
①



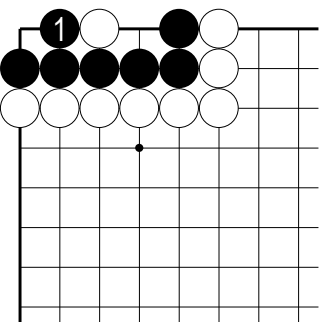
②



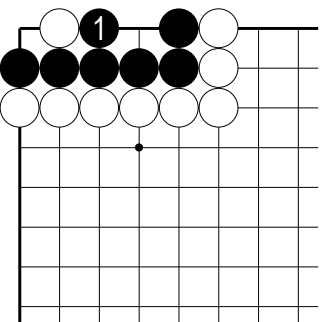
③



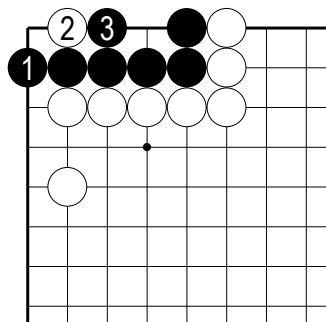
④



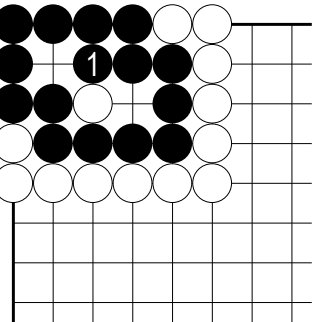
⑤



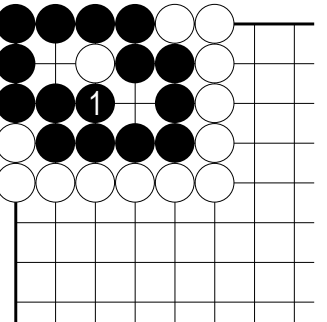
⑥



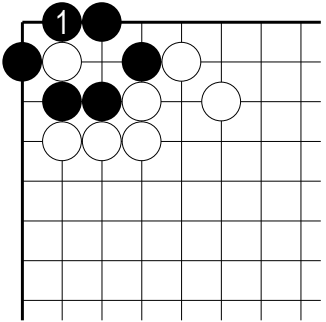
⑦



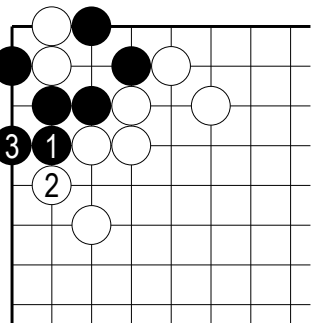
⑧



⑨



⑩



**【ワンポイント】**  
 正解手順のあと、白がさらに攻めてきたとしても黒が取られないことをご確認ください！