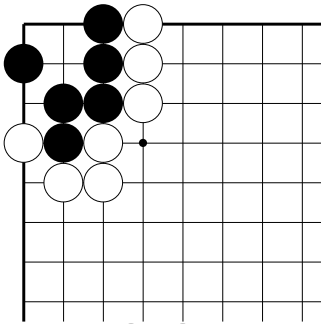


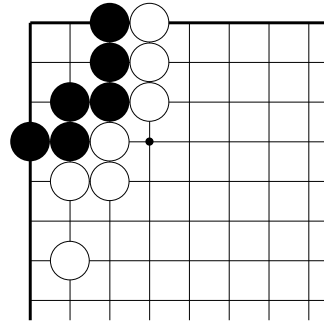
# 「生き死に」に慣れるための基本詰碁⑦～問題編～

◎各黒番です。  
二眼を作って生きるにはどこに打てば良いでしょうか？

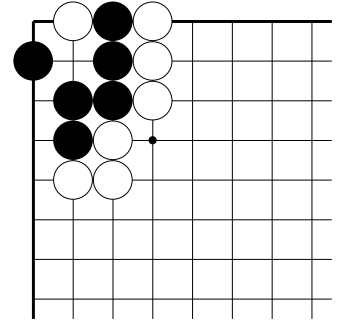
①



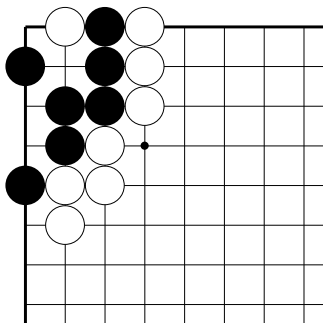
②



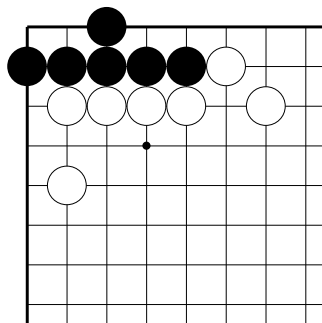
③



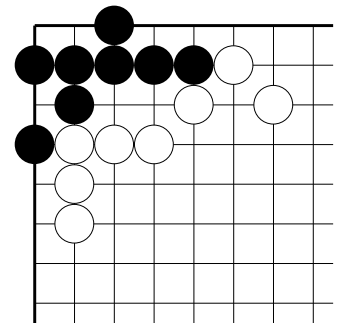
④



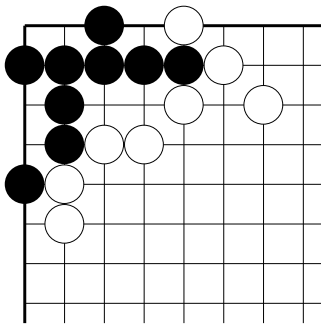
⑤



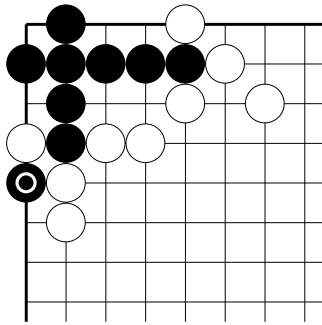
⑥



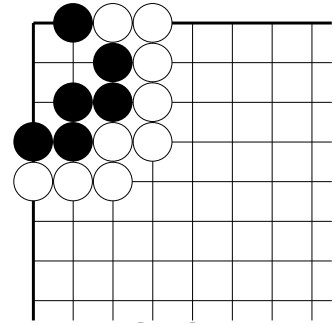
⑦



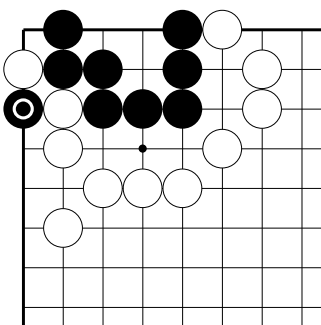
⑧



⑨



⑩



## 【ワンポイント】

すでにある一眼に加えて、新しく眼を増やす手を考えてみましょう！

※⑧、⑩は黒○の一子を取られたとしても、隅の一団が生きられればOKです◎