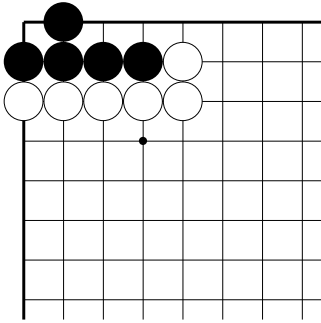


「生き死に」に慣れるための基本詰碁③～問題編～

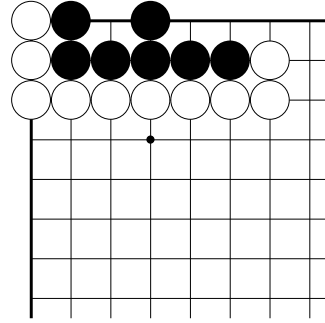
◎各黒番です。

二眼を作って生きるにはどこに打てば良いでしょうか？

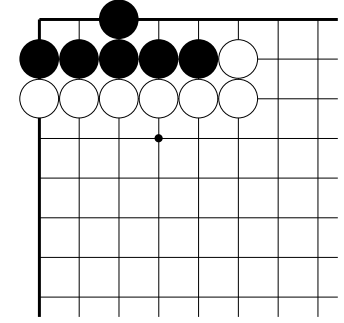
①



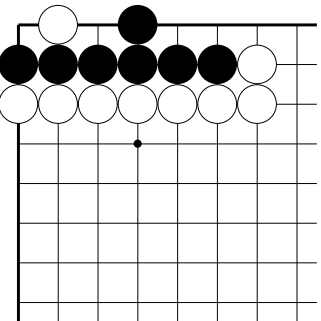
②



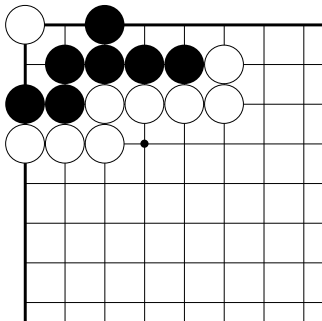
③



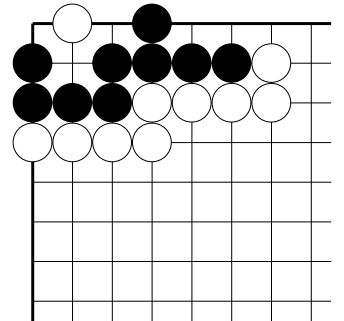
④



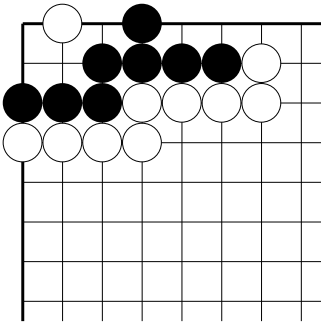
⑤



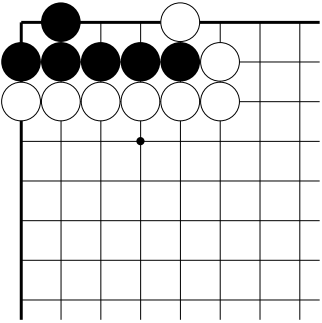
⑥



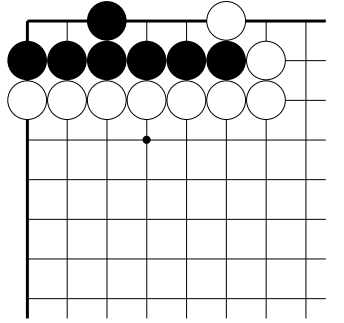
⑦



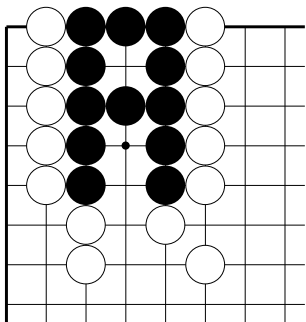
⑧



⑨



⑩



【ワンポイント】

すでにある一眼(いちがん)を確認して、新たにもう一眼増やす手を考えてみましょう。