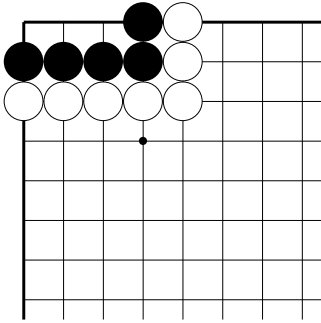


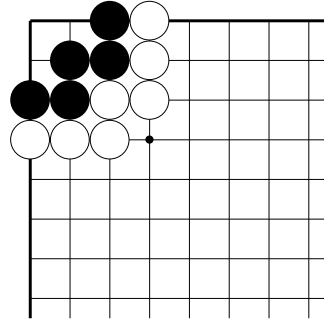
# 「生き死に」に慣れるための基本詰碁①～問題編～

◎各黒番です。  
二眼を作って生きるにはどこに打てば良いでしょうか？

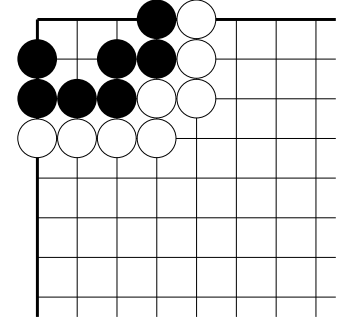
①



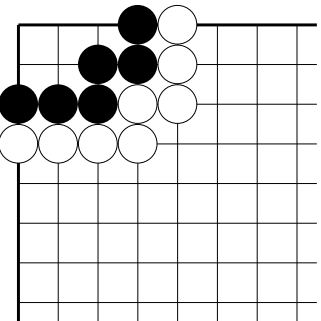
②



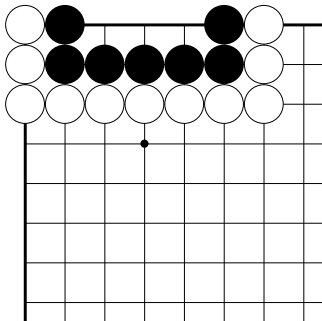
③



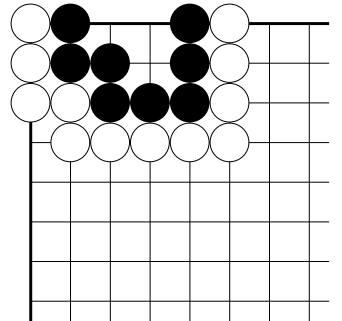
④



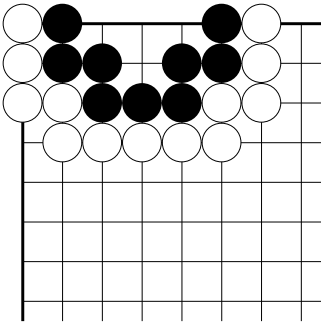
⑤



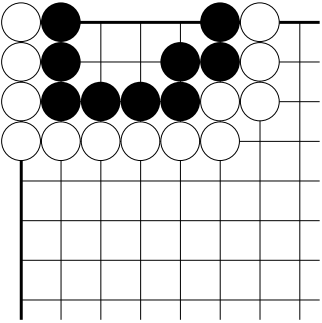
⑥



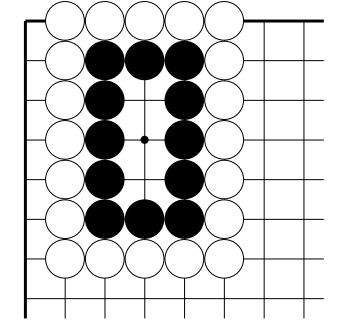
⑦



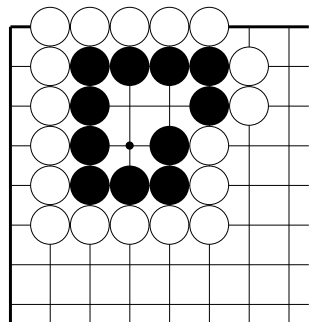
⑧



⑨



⑩



## 【ワンポイント】

黒地を二部屋に分けるようなイメージで、生きるための1手を考えてみましょう！